

IT'S TIME TO CONTAIN THE CHAOS

Your world has become increasingly difficult.



VALUABLE TIME IS WASTED

Updates and preventive maintenance require tracking down devices.



CYBERSECURITY IS HEIGHTENED

New threats and vulnerabilities are constantly emerging.



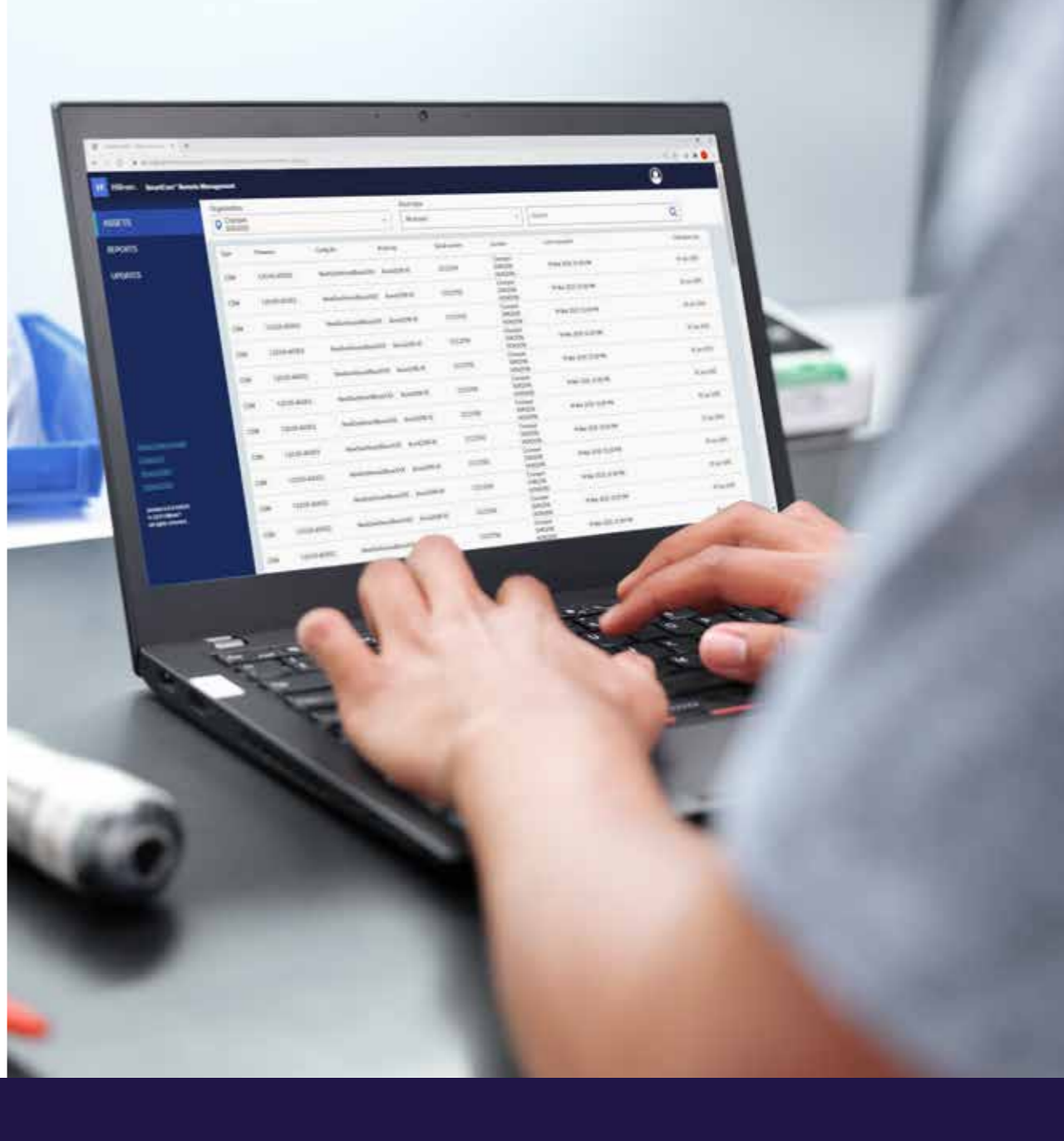
DEVICE DATA IS ESSENTIAL

Asset management requires more detail than ever before.

GET RELIEF WITH REMOTE CONTROL

SmartCare Remote Management

Take control of the health and well-being of your equipment by proactively managing it from a single, remote location. **SmartCare** Remote Management allows for more consistent and timely management of connected devices across your enterprise, so you can ensure your fleet is functioning at its finest.



YOUR TO-DO LIST JUST GOT EASIER

See how **SmartCare** Remote Management is designed to streamline your workflow.



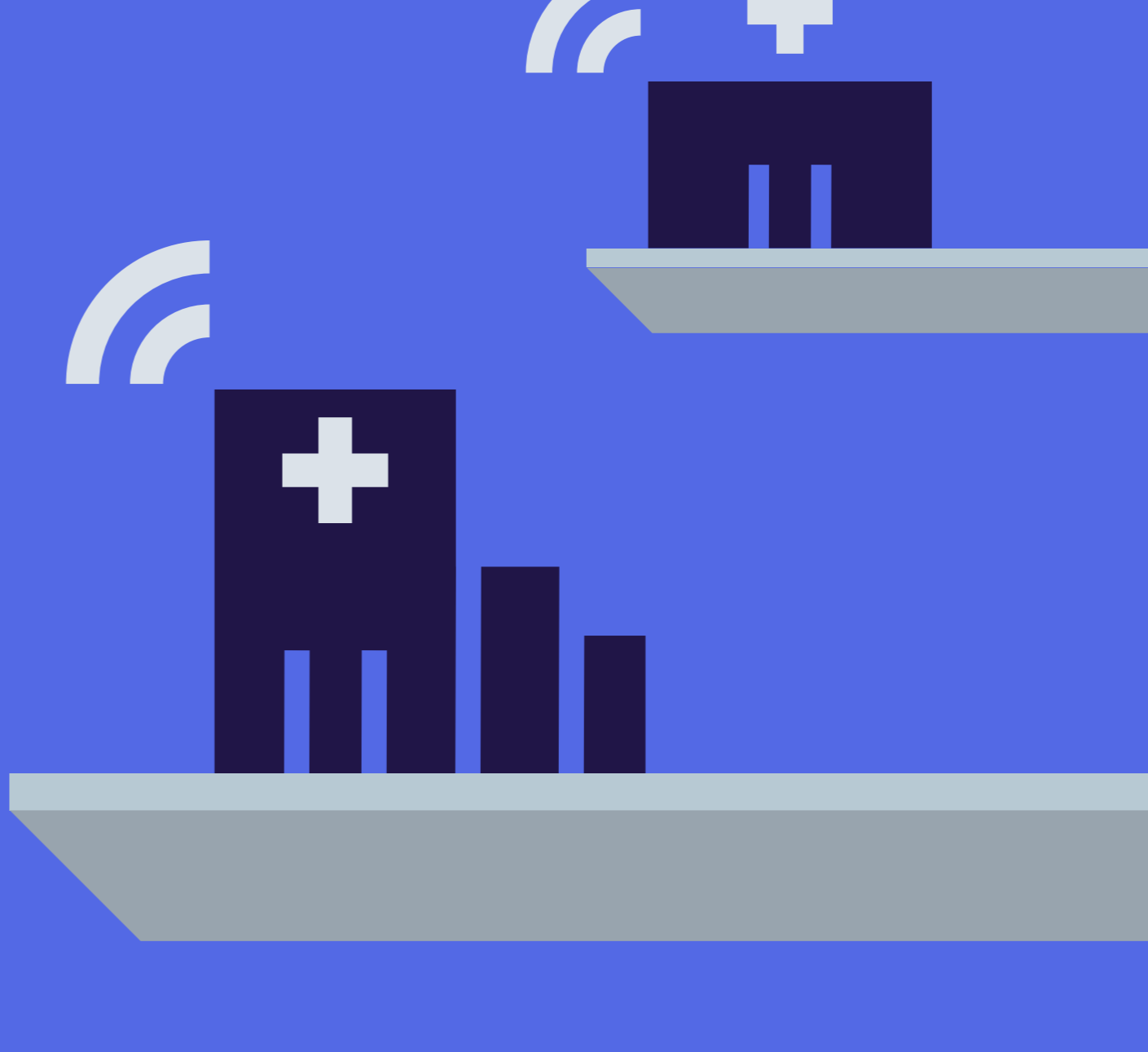
CONNECTED AND COMPLIANT

Security is essential. That's why multiple checkpoints ensure your data is safe and protected at all times with our secure, cloud-based system that never interacts with patient health information.



ALL IN A DAY'S WORK

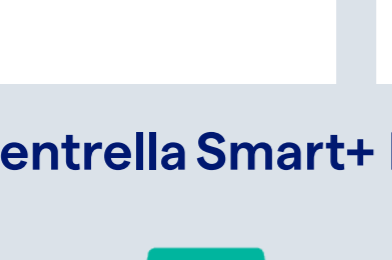
SmartCare Remote Management makes it easier to tackle whatever comes your way.



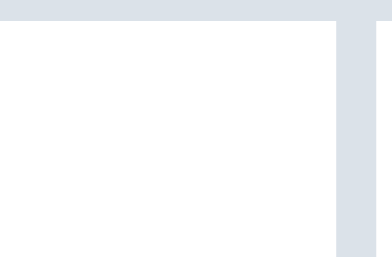
Progressa Smart+ Bed



Centrella Smart+ Bed



Welch Allyn Connex Integrated Wall System



Welch Allyn Connex Spot Monitor



Welch Allyn Connex Vital Signs Monitor



Welch Allyn RetinaVue 700 Imager



Welch Allyn RetinaVue 700 Imager



REMAIN AHEAD OF PREVENTIVE MAINTENANCE

SmartCare Remote Management gives you an edge. Take a comprehensive look at your devices, including their status, location and what needs preventive maintenance. Then target your efforts accordingly.



20-30 MINUTES SAVED
PER DEVICE ON LOCATION TRACKING*

TROUBLESHOOT WITH EASE

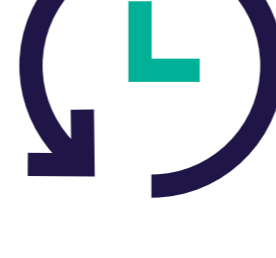
Next up, troubleshooting. Gain a better understanding of what went wrong and troubleshoot a fix by pulling log files with ease.



10 MINUTES SAVED
PER DEVICE ON LOG RETRIEVAL*

ASSESS AND UNDERSTAND ERRORS

Sometimes you need an extra set of eyes. Being connected to the cloud allows a Hillrom service representative to easily view your data, so we can pinpoint issues quickly and provide solutions faster.



60 MINUTES SAVED
PER DEVICE WITH ADVANCED TROUBLESHOOTING*

SIMPLIFY UPDATES AND REPORTING

Deploy updates or confirm installation from the comfort of your desk, saving time on these key tasks.



30 MINUTES SAVED
PER DEVICE ON FIRMWARE UPGRADES*



10 MINUTES SAVED
PER DEVICE DEPLOYING CONFIGURATION FILES*



QUICKLY VIEW REPORTS TO CONFIRM UPDATES DEPLOYED PROPERLY*

ARE YOU READY TO TAKE CONTROL?

Contact a Hillrom representative today.

Learn more at hillrom.com

SmartCare Remote Management features may vary based on your device. Contact your Hillrom representative for more information.

*Estimated time savings. Actual time may vary based on the facility size and number of devices. Not all features are available for each device. Contact your Hillrom representative to learn more.

¹ Healthcare Informatics. "2017 Breach Report: 477 Breaches, 5.6M Patient Records Affected." <https://www.hcinnovationgroup.com/cybersecurity/news/1302924/2017-breach-report-477-breaches-56m-patient-records-affected>. Accessed 9 Oct. 2018.

² National Institute of Standards and Technology. "Interactive Infographic: Cybersecurity 2018." <https://www.nist.gov/image/nistcybersecurity-infographicdownloadable-65x11final-1.jpg>. Accessed 13 Nov. 2018.

³ CyberPolicy. "4 Healthcare Cybersecurity Stats That'll Raise Your Blood Pressure." <https://techjury.net/blog/healthcare-data-breaches-statistics/#gref>. Accessed 9 Oct. 2018.

⁴ Arora, S. "Hackers Selling Healthcare Data in the Black Market." <https://www.securelink.com/blog/healthcare-data-new-prize-hackers/>. Accessed 1 Nov. 2018.

⁵ Becker's Healthcare. "What Cyber Criminals Want With Your Health Record." <https://www.beckershospitalreview.com/healthcare-information-technology/what-cyber-criminals-want-with-your-health-record.html>. Accessed 17 Dec. 2018.

⁶ Ponemon Institute Research Report: "Sixth Annual Benchmark Study on Privacy & Security of Healthcare Data." <https://www.ponemon.org/research/ponemon-library/security/sixth-annual-benchmark-study-on-privacy-security-of-healthcare-data.html>. Accessed May 2016.

Baxter, Hillrom, Centrella, Connex, Progressa, RetinaVue, and Welch Allyn are trademarks of Baxter International Inc. or its subsidiaries. APR141702 rev 4 17-JUN-2022 ENG - US.